

Seymour
Duncan®

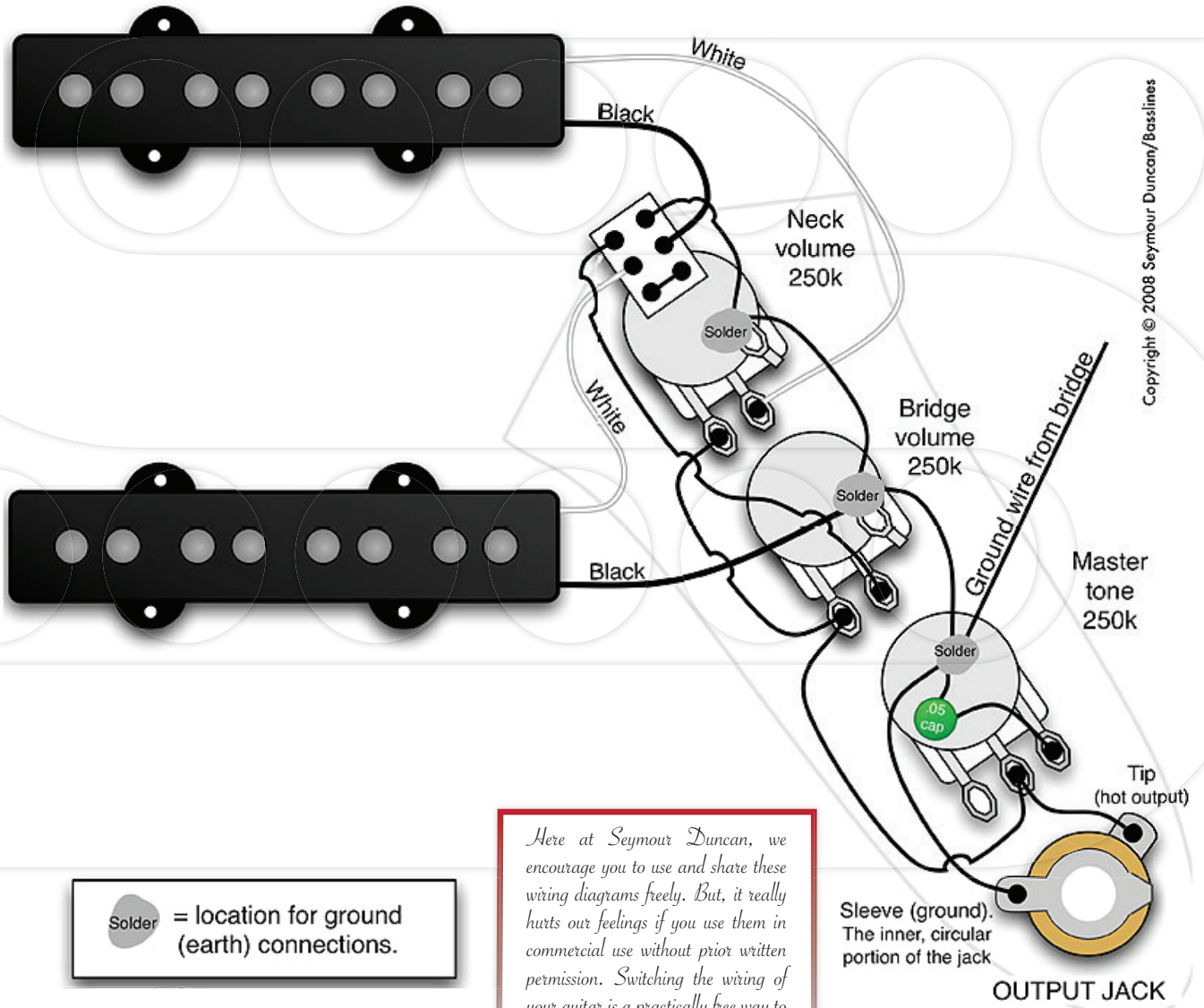
JAZZ BASS | 2 VOLUME (push/pull for series/parallel) 1 TONE

This wiring uses a push/pull pot to switch the two pickups from parallel to series using a push/pull pot. Standard J-Bass wiring is parallel. Switching to series will give you a boost in output, and a boost in mid-range.


UP = series

DOWN = parallel

NOTE: Bridge Volume Control will not work when in Series Mode



Copyright © 2008 Seymour Duncan/Basslines

 = location for ground (earth) connections.

Here at Seymour Duncan, we encourage you to use and share these wiring diagrams freely. But, it really hurts our feelings if you use them in commercial use without prior written permission. Switching the wiring of your guitar is a practically free way to get new tones out of your guitar... Now go have fun!